

Why Bio Resin?

Because Bio Resin has half the carbon footprint of conventional epoxy resin.



2018 mini GUIDE



Rider: Sarah Quira Offspring Australia 🇦🇺 John Carter
Rider: Jaeger Stone Australia 🇦🇺 John Carter

† Estimated weight for reference purposes only. Actual production average weights will be updated on our website.
All specifications, designs and features are subject to change without prior notice. Mini Guide Revision 04

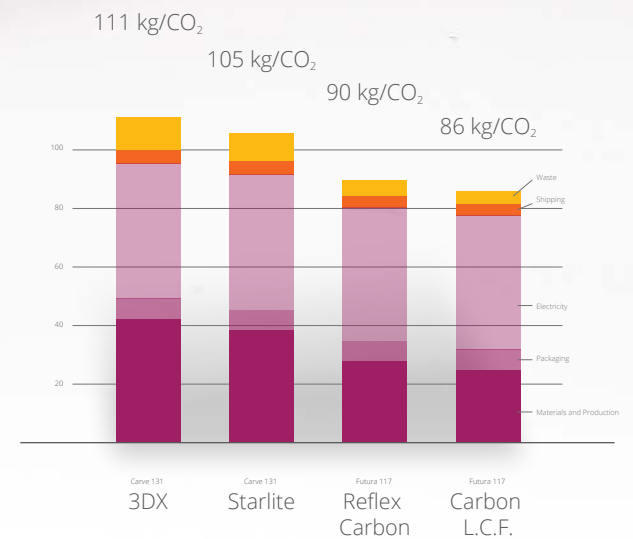
INNOVATION
STARBOARD
QUALITY

INTRODUCING CARBON L.C.F.

OUR LOWEST CARBON FOOT PRINT BOARD TECHNOLOGY

We designed Carbon L.C.F. to be energy efficient. Carbon L.C.F. uses low-carbon materials and consumes less of it by combining Bio Resin with end-grain Balsa.

Bio Resin has half the carbon footprint as conventional epoxy resin. End-Grain balsa has just a tenth of the footprint of conventional petroleum-based PVC.



INTRODUCING BALSA

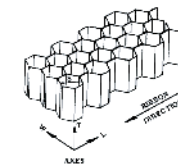
By turning the balsa grains vertically within the sandwich structure, Starboard's innovative end-grain sandwich connects the top and bottom faces with millions of vertical honeycomb-like pillars.

The result: significantly higher mechanical properties than conventional petroleum-based PVC:

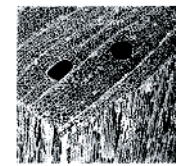
3x shear modulus, 3x tensile strength, 20x tensile modulus, 2.75x compressive strength and 12x compressive modulus.

So while reducing carbon footprint, Carbon L.C.F technology is also stronger, stiffer and as light as regular carbon boards.

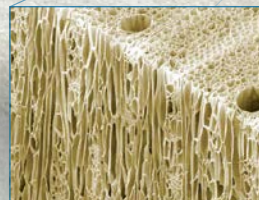
Low carbon footprint. Light, crisp and fast: Carbon L.C.F.



HEXAGONAL HONEYCOMB
2X Magnification



END-GRAIN BALSA
50X Magnification





KODE FREEWAVE

DESCRIPTION

Winner of the 2017 Planchemag test, the Kode FreeWave is our fast wave/freestyle/freeride crossover board. Each size is designed to ride in either Thruster fin configuration for more maneuverability and grip, or in Single fin configuration for speed.

The Kode FreeWave is known as a reference and a favourite in the freewave segment.

WHAT'S NEW?

New shape: 3cm shorter improves maneuverability. Slightly shallower concave adds some crispness to the riding sensation. The 109 now also has shallow double concaves and more vee to bring its grip level with the other sizes.

New Technology: Carbon L.C.F is our new lightweight carbon construction that uses end-grain balsa sandwich instead of PVC to lower the board's carbon footprint while keeping the lowest weights.

The other technology option is Carbon Reflex: our lightest, most exclusive and a limited-edition flagship construction that combines Starboard's proprietary UltraCore sandwich with the lightest biaxial carbon.

New MFC FreeWave fin.



FLARE

DESCRIPTION

Our dedicated freestyle board and the board of PWA Freestyle World Champion Dieter Van der Eyken.

WHAT'S NEW?

New shape: new volume distribution with the thickest point pushed back. The 93 is more compact: 5cm shorter and 1cm wider. The 103 is narrower between the straps to make it more reactive. The 113 is all-new, it is a scaled-up version of the new 103.

New Technology: Carbon L.C.F is our new lightweight carbon construction that uses end-grain balsa sandwich instead of PVC to lower the board's carbon footprint while keeping the lowest weights.

The other technology option is Carbon Reflex. It is our lightest, most exclusive and a limited-edition flagship construction that combines Starboard's proprietary UltraCore sandwich with the lightest biaxial carbon.

Power Box fin box.

SPECIFICATIONS

	86	94	103	109
Volume				
Length	229	231	231	231
Width	59.5	61.5	65	66
Weight <i>Carbon Reflex</i>	5.90	6.05	6.35	6.45
Weight <i>Carbon LCF</i>	6.25	6.40	6.70	6.80
Fins <i>Supplied with board</i>	1x MFC TF 19 2x Natural Wave 110	MFC FreeWave 28	MFC FreeWave 30	MFC FreeWave 30
Fin Box	2x Starbox 1x US Box 8"	2x Starbox 1x US Box 8"	2x Starbox 1x US Box 8"	2x Starbox 1x US Box 8"

FIN OPTIONS FOR KODE FREEWAVE

Thruster Fins <i>Available as an optional upgrade pack</i>	1x MFC TF 20 2x Drake Natural Wave 110	1x MFC TF 20 2x Drake Natural Wave 130	1x MFC TF 21 2x Drake Natural Wave 130
---	---	---	---



SPECIFICATIONS

	81	93	103	113
Volume				
Length	227	223	225	224
Width	57.5	63	65	68.5
Weight <i>Carbon Reflex</i>	5.8	6.2	6.3	6.5
Weight <i>Carbon LCF</i>	6.0	6.4	6.7	6.9
Fins	Ready to Freestyle 17	Ready to Freestyle 18	Ready to Freestyle 19	Ready to Freestyle 21
Fin Box	Power Box	Power Box	Power Box	Power Box





ODA JOHANNE
PWA FREESTYLE VICE-CHAMPION 2015

innovation
STARBOARD
quality



A.I.R FREEWAVE

DESCRIPTION

The A.I.R is about making a wave/freewave board fast and plane up quick, then making it turn off a hyper-compact outline and its forward vee instead of its rocker. Ideal for smaller to medium sized waves where you need extra versatility from the board.

The boards are 220 to 222cm long, with a short nose and tail and a mast track pulled back to allow the board to react and turn quickly.

With such a short tail, the bat-shape tail outline allows us to maximise fin grip, avoid cavitation while keeping the area behind the fins floaty and as short as possible, all in the goal to maximise reactivity and maneuverability.

The thruster set up was chosen for its combination of speed and maneuverability. The double concave bottom adds grip in the turns and the spiraling forward vee creates a power-steering effect when you engage the rails into a turn.

WHAT'S NEW?

The A.I.R is an all-new wave/freewave board concept, most appreciated by wave riders coming from a freestyle background and riders who look for speed.

About the name: the A.I.R name comes from the Parley concept: Avoid, Intercept and Redesign. Avoid the use of plastics where possible, intercept plastics and recycle them when possible, and redesign products to use less plastic. Because the A.I.R is the first board to use our new Carbon L.C.F. construction, we thought A.I.R would make a nice name for our all-new wave board.

SPECIFICATIONS

	83	93	103
Volume			
Length	220	222	222
Width	59.5	61.5	65
Weight <i>Carbon LCF</i>	TBA	TBA	TBA
Weight <i>Carbon Reflex</i>	TBA	TBA	TBA
Fins Supplied with board	1x Stone Surf 19 2x Natural Wave 10	1x Rush 20 2x Natural Wave 10	1x Rush 21 2x Natural Wave 10
Fin Box	2x Starbox 13.5 1x US Box 8"	2x Starbox 13.5 1x US Box 8"	2x Blue Starbox 13.5 1x US Box 8"



ULTRAKODE

DESCRIPTION

The Magic Waveboard, the ultra-allrounder: Thruster, quad or twin, it's the dream wave board by the Dream Wave Team.

Five lightweight Starboxes weigh the same as three regular fin boxes, so versatility doesn't come at a price.

The choice of Jaeger Stone, Dany Bruch and Wave World Champions Philip Köster, Daida and Iballe Moreno.

The 72 and 76 are designed by Mark and Jaeger Stone; the four largest sizes are by Dany Bruch and PWA Champion Philip Köster. The 80 size is a merger of the two groups.

WHAT'S NEW?

New MFC fins on the 86, 93, 99, 105. New fin positions on the 80.

New Technology: Carbon L.C.F is our new lightweight carbon construction that uses end-grain balsa sandwich instead of PVC to lower the board's carbon footprint while keeping the lowest weights.

The other technology option is Carbon Reflex. It is our lightest, most exclusive and a limited-edition flagship construction that combines Starboard's proprietary UltraCore sandwich with the lightest biaxial carbon.

SPECIFICATIONS

	72	76	80	86	93	99	105
Volume							
Length	217	219	223	224	226	230	234
Width	53.5	55	58	59	61	62.5	65.5
Weight <i>Carbon Reflex</i>	5.6	5.8	5.9	6.1	6.2	6.4	6.6
Weight <i>Carbon LCF</i>	6.1	6.3	6.4	6.6	6.8	7.0	7.2
Fins Supplied with board	1x Drake Stone Surf 18 2x Drake Stone Surf 11	1x Drake Stone Surf 18 2x Drake Stone Surf 11	1x Drake Stone Surf 19 2x Drake Stone Surf 11	1x MFC TF 18 2x MFC TF 12	1x MFC TF 19 2x MFC TF 12	1x MFC TF 20 2x MFC TF 12	1x MFC TF 21 2x MFC TF 12
Fin Box	4x Starbox 1x US Box 8"	4x Starbox 1x US Box 8"	4x Starbox 1x US Box 8"	4x Starbox 1x US Box 8"	4x Starbox 1x US Box 8"	4x Starbox 1x US Box 8"	4x Starbox 1x US Box 8"

FIN OPTIONS FOR ULTRAKODE

Quad Fins Available as an optional upgrade pack	2x Natural Wave 11 2x Twin Surf 14.5	2x Natural Wave 11 2x Twin Surf 14.5	2x Natural Wave 11 2x Twin Surf 14.5	2x Natural Wave 11 2x Twin Surf 15	2x Natural Wave 11 2x Twin Surf 15.5	2x Natural Wave 11 2x Twin Surf 16	2x Natural Wave 11 2x Twin Surf 16.5
Twin Fins Sold separately only	2x MB Twinzer 16	2x MB Twinzer 16.5	2x MB Twinzer 16.5	2x MB Twinzer 17	2x MB Twinzer 17	2x MB Twinzer 17	2x MB Twinzer 17



SARAH QUITA OFFERINGA
PWA SLALOM CHAMPION 2016



CARVE iQ

DESCRIPTION

Pure freeride boards that merge the AtomIQs and the Carve into one. The three smaller sizes are slim, thin and compact, replacing the AtomIQs. More aggressive, maneuverable boards with an exciting, connected feel and a very fast ride. The three larger sizes are longer and more stable, designed with plug-and-play philosophy. Maximum performance with minimum fuss. They replace the Carves.

WHAT'S NEW?

114, 124, 134, compared to the AtomIQs: 8cm shorter for more control and a more responsive board. Wider tail for more back-foot power. Deeper concaves for added grip. More Vee for improved jibing and comfort through chop.

131, 141, 151, compared to the Carves: 6cm shorter for more control and maneuverability but keeping the same long, flat profiles to glide easily onto the plane. Deeper concaves for added grip. More Vee for improved jibing and comfort through chop.
New Carbon L.C.F technology.

Foil Ready on all sizes.

SPECIFICATIONS

	104	114	124	131	141	151
Volume	104	114	124	131	141	151
Length	231	231	230	246	246	246
Width	71.5	76.0	81.0	81.5	83.5	83.8
Weight <i>Carbon LCF</i>	6.7	7.0	7.3	7.6	7.8	7.9
Weight <i>3DX</i>	TBC	TBC	TBC	TBC	TBC	TBC
Fins <i>Supplied with board</i>	Drake Freeride Power 36	Drake Freeride Power 38	Drake Freeride Power 40	Drake Freeride Power 44	Drake Freeride Power 46	Drake Freeride Power 48
Fin Box	Foil Box	Foil Box	Foil Box	Foil Box	Foil Box	Foil Box



GO

DESCRIPTION

One for all. The iconic and irreplaceable GO board: the progressive boards for improving beginners to fully advanced windsurfing.

WHAT'S NEW?

The 2018 GO carry-over from 2017, with shapes identical to the wider, slimmer Carves. Built in the crisper, stiffer 3DX construction. Centre-fin box for beginner windsurfing now standard across all sizes. The GO has the most premium graphics, design and construction in its segment.

SPECIFICATIONS

Volume	121	131	141	151	161
Length	251	252	251	251	250
Width	75.5	81	83.5	86.5	87
Weight 3DX	9.5	10.0	10.42	10.72	11.01
Fins Supplied with board	Drake Shallow 410	Drake Shallow 410	Drake Shallow 410	Drake Shallow 410	Drake Shallow 410
Fin Box	2x Tuttle Box	2x Tuttle Box	2x Tuttle Box	2x Tuttle Box	1x Deep Tuttle Box



ATOMIQ DUO

DESCRIPTION

Our dual-purpose board: for kids to learn to windsurf on, for adults to blast and freeride on.

WHAT'S NEW?

Easier to learn on, more fun to ride. The AtomIQ Duo replaced the Kode Tufskin with a slimmer shape that makes it more stable to learn on and more maneuverable and responsive to freeride on. New crisper, stiffer 3DX construction.

SPECIFICATIONS

Volume	114	124	130
Length	239	239	239
Width	71	75.5	84
Weight 3DX	9.1	9.5	9.9
Fins Supplied with board	Drake FreeRide Power 36 + Drake Shallow 410	Drake FreeRide Power 38 + Drake Shallow 410	Drake FreeRide Power 44 + Drake Shallow 410
Tail Fin Box	Power Box	Power Box	Power Box
Center Fin Box	Tuttle Box	Tuttle Box	Tuttle Box



BEST
SELLER

GO WINDSURFER

◀ DESCRIPTION

A variation of the GO with more glide in non-planing conditions and a fully-retractable daggerboard. A bestseller and our recommendation as a windsurfer's first board.

◀ WHAT'S NEW?

Two sizes are available. Both have a nice even volume distribution that improves pitch stability. The wider and thinner outlines improve roll stability. Overall: more lightwind glide, more highwind control, more highwind comfort and easier to get planing with their efficient «bullet nose» low-rockers.

SPECIFICATIONS		
Volume	175	195
Length	268	271
Width	83	87.5
Weight <i>3DX</i>	13.29	13.61
Fins <i>Supplied with board</i>	Clipperbox Daggerboard 570	Clipperbox Daggerboard 570
Fin Box	Deep Tuttle Box	Deep Tuttle Box



READY
TO FOIL

TEST
WINNER

FUTURA

◀ DESCRIPTION

The test-winning freerace board for technical windsurfers looking for the impossible: maximum speed mixed with comfort, control and jibing precision.

◀ WHAT'S NEW?

New Carbon L.C.F construction. Shapes are carried over from 2017: shorter, thinner, wider for more wind range. Added vee for improved comfort and jibing. Added tail area above the cutaways to improve jibing exit speed without affecting straight-line performances. Ultra-light Carbon Reflex technology is available as a limited edition, made to order.

Foil Ready for all sizes 107 and up.

SPECIFICATIONS						
Volume	90	97	107	117	127	137
Length	233	235	235	231	230	231
Width	62	67	71	78	83	88
Weight <i>Carbon Reflex</i>	TBA	TBA	TBA	TBA	TBA	TBA
Weight <i>Carbon LCF</i>	TBA	TBA	TBA	TBA	TBA	TBA
Fins <i>Supplied with board</i>	Drake Slalom DW 34 Ready to Race	Drake Slalom DW 36 Ready to Race	Drake Slalom DW 38 Ready to Race	Drake Slalom DW 42 Ready to Race	Drake Slalom DW 44 Ready to Race	Drake Slalom DW 46 Ready to Race
Fin Box	Tuttle Box	Tuttle Box	Foil Box	Foil Box	Foil Box	Foil Box

ian fox
starboard R&D



innovation
starboard
quality



iSONIC

DESCRIPTION

Starboard's flagship board range. The cutting edge in windsurf board technology, the lightest, fastest windsurf boards. World Champion 2016, men and women.

WHAT'S NEW?

New 147 and 157 sizes. 117, 127, 137, 147 and 157 are Ready To Foil: the fin boxes are reinforced and ready for foiling.

New Carbon L.C.F technology available for all sizes.

90: we improved planing performance and the jibe exit speed by increasing the width at 60cm by 9mm. This also has a positive incidence on the acceleration that is very important in slalom, where getting to max speed as quick as possible is key to winning. This also make the board easier to control as the ride becomes lower than before.

SPECIFICATIONS

Volume	iSonic Speed Luderitz Special	70 Speed Slalom	75 Speed Slalom	80 Speed Slalom	87 Speed Slalom	90 Speed Slalom
Length	225	232	232	231	232	232
Width	44	50	55	59	60	62.5
Weight <i>Carbon Reflex</i>	TBA	TBA	TBA	TBA	TBA	TBA
Weight <i>Carbon LCF</i>	TBA	TBA	TBA	TBA	TBA	TBA
Fin Box	Tuttle Box	Tuttle Box	Tuttle Box	Tuttle Box	Tuttle Box	Tuttle Box

iSonic boards are supplied without fins

97: we reduced the thickness up to 7mm, particularly in nose area, to increase control. The cut-aways in the tail have been redesigned to reduce the wet surface for a more slippery board. Together, you have a board that you can control further, in more winds than before. Highly recommended for medium weight racers as their medium board.

107: this board is a bit bigger this year, 1cm wider and thicker in tail to increase the performances with 8.6 sails, as the gap between 137 and 107 has grown big. To keep the top end speed and performances with a 7.8, we also reduced the wet-surface in tail by adjusting the cut-aways. The result: this board accelerates more than before, even with a 7.8. The winning slalom machine for medium and heavy weights in medium wind. Foil Ready.

117: totally new this year, the 117 now draws from the same style as the 127 and 137 with more lightwind emphasis. It is the light weapon for lighter weights and the powerful option for medium to heavy weights in medium winds. Foil Ready.

127: more compact and 2cm shorter. The wetted surface area is 2cm narrower at 30cm from the tail (although the width of the board at this point is only 5mm narrower). The result is earlier planing, quicker acceleration, higher top-speed and improved jibing performance. Foil Ready.

134: this much-loved shape from 2016 makes a return following to the PWA's decision to add foiling as a lightwind alternative to slalom in the 2018 season. While the 137 below is more powerful in lighter winds, the 134 is the preferred choice in windier conditions with its narrower tail.

137: the new 137 is 3cm shorter. The wetted surface area is 1.7cm narrower at 30cm while the width of the board at this point is 1.3cm narrower. Like for the 127, the result is earlier planing, quicker acceleration, higher top-speed and improved jibing performance. Foil Ready.

147, 157: the new 147 size is designed to meet IFCA's updated 91cm limit for slalom racing. Together with the 157, they are two hyper-efficient lightwind machines. At these width, they also become the most high-performance foil boards from Starboard that can also be used for regular windsurfing.

SPECIFICATIONS

Volume	97 Slalom	107 Slalom Foil	117 Slalom Foil	127 Slalom Foil	134 Slalom Foil	137 Slalom Foil	147 Slalom Foil	157 Slalom Foil
Length	231	231	228	229	228	228	TBA	TBA
Width	67.5	72	77	83	85	85	TBA	TBA
Weight <i>Carbon Reflex</i>	TBA	TBA	TBA	TBA	TBA	TBA	TBA	TBA
Weight <i>Carbon LCF</i>	TBA	TBA	TBA	TBA	TBA	TBA	TBA	TBA
Fin Box	Tuttle Box	Deep Tuttle	Foil Box	Foil Box	Foil Box	Foil Box	Foil Box	Foil Box

iSonic boards are supplied without fins



Remi VILA
Starboard R&D

INNOVATION
QUALITY **STARBOARD**



FOIL

DESCRIPTION

The light to medium wind foil board. Balanced and stable with a wide outline and a wide tail: offers power, stability and early planing. The model for slalom, racing, progressing and light-to-medium wind freeride.

WHAT'S NEW?

Based on the UltraSonic 147, with added tail volume, additional insert positions, reinforced construction and a reinforced Deep Tuttle finbox. Swap the foil for a fin and the Foil 147 becomes an ultra-efficient, fast planing machine for lightwind performance windsurfing.

SPECIFICATIONS

Volume	147
Length	241
Width	95
Weight <i>Carbon Reflex</i>	8.35
Weight <i>Technora</i>	9.35
Fin Box	Foil Box



ULTRASONIC

DESCRIPTION

The extra-wide iSonic designed specifically for maximum lightwind efficiency. It is longer than the regular iSonic to glide on to the plane more efficiently. When foiling, this makes them more forgiving as well. The footstrap inserts and less boxy rail shape also provide a more comfortable, less powerful stance.

WHAT'S NEW?

New graphics. New Carbon L.C.F. construction. The ultralight, limited edition Carbon Reflex remains available. Ready to Foil.

READY
TO FOIL

SPECIFICATIONS

Volume	147
Length	241
Width	95
Weight <i>Carbon Reflex</i>	6.75
Weight <i>Carbon LCF</i>	8.30
Fins <i>Supplied with board</i>	Race 58 Ready to Race
Fin Box	Foil Box

TIESO3 YOU
STARBORD R&D



STARBORD
R&D



FORMULA

DESCRIPTION

The lightwind, course racing powerhouse, with an all new shape and now also ready to foil. Fit the Race foil and go upwind/downwind faster, more efficiently and at angles you'd never thought possible.

WHAT'S NEW?

Bullet nose: 2cm lower than last year for improved aerodynamics, more control and a smoother transition into planing. The cut-aways are 2cm longer to improve top-end speed and generate more lift from the fin. Thicker, boxier rails improve upwind performance and increase the rider's leverage over the board for more power. Ready to Foil. Available in Carbon Reflex and Carbon L.C.F.

NEW
SHAPES

READY
TO FOIL

SPECIFICATIONS

Volume	177
Length	228
Width	100.5
Weight <i>Carbon Reflex</i>	9.4
Fin Box	Foil Box



SLALOM ONE & FORMULA ONE

SLALOM ONE

The slalom package by Starboard. Available for windsurfing clubs and national associations to purchase distributor-direct. Available for slalom enthusiasts and shops to book a fleet, to organise a private slalom race among friends and customers.

FORMULA ONE

The official Formula Experience equipment package. Formula Experience is the only 100% planing one-design sailing class, with races possible in the widest range of wind and water conditions.

WHAT'S NEW?

Foil Box in the Formula One. A one design foil for this board is coming soon.

SPECIFICATIONS

	Slalom One	Formula One 117	Formula One
Volume	110	117	162
Length	230	217	228
Width	75	93	100
Weight <i>3DX</i>	8.4	9.1	11.7
Fins <i>Supplied with board</i>	1x Slalom DW 38 Ready to Race 1x Slalom DW 42 Ready to Race	Race 62 Ready to Race	1x Drake R13 70 Ready to Race
Fin Box	Deep Tuttle Box	Foil Box	Foil Box



PHANTOM RACE

DESCRIPTION

The raceboard program by Starboard.

WHAT'S NEW?

New 377L shape with much improved lightwind performance: thicker to help to get on the rails quicker, avoid diving and staying over the chops all the time. The new slanted mast track is placed 2 cm further back and daggerboard also 2 cm further forwards to make the board more sensitive in light winds and get on the rail quicker. To get planing earlier, the bat wings are wider at 60cm by 3cm but also narrower in the tail to get more top end speed and a better feel of the fin. Available in Carbon Reflex and Carbon L.C.F.

New Phantom One, for direct sales to racing clubs and national associations.

New technology options: the Phantom 299 shape is also available in 3DX, Carbon Reflex and Carbon L.C.F.

SPECIFICATIONS

	Phantom 295 L	Phantom 299	Phantom 377	Phantom 377 L	Phantom One
Volume	218	256	263	NA	256
Length	295	299	377	377	299
Width	72	69	67	67.5	69
Weight <i>Carbon Reflex</i>		12.1	13.0	NA	
Weight <i>Carbon LCF</i>		12.9	NA	NA	12.9
Weight <i>3DX</i>	13.2	15.4			
Fins <i>Supplied with board</i>	1x Drake Venom 54 1x Daggerboard 78	1x Race 58 Ready to Race 1x Daggerboard 78	1x Race 52 Ready to Race 1x Daggerboard 78	1x Race 52 Ready to Race 1x Daggerboard 78	1x Race 58 Ready to Race 1x Daggerboard 78
Fin Box	Deep Tuttle Box	Deep Tuttle Box	Deep Tuttle Box	Deep Tuttle Box	Deep Tuttle Box



PHANTOM FREE

DESCRIPTION

Raceboarding is fun but very technical. Freeriding is fun but you need planing conditions. The Go Windsurfer is also fun but it's not very high performance. The Phantom Free fills that gap: a fun, high performance freeride raceboard. Less technical than full raceboard, more high performance than a GO Windsurfer.

WHAT'S NEW?

It's an all new board. Take a Phantom shape trimmed down to 273cm, keep the batwings and remove the adjustable mast track and simplify the deck configuration. The board becomes lighter, simpler and more fun for more people, in all conditions.

SPECIFICATIONS

Volume	207
Length	271.4
Width	75
Weight <i>3DX</i>	15.3
Fins <i>Supplied with board</i>	1x Freeride Power 52 1x Daggerboard Phantom Free
Fin Box	Deep Tuttle Box



WINDSUP INFLATABLE DELUXE

DESCRIPTION

Compact, light and strong; you can go paddleboarding, learn windsurfing and get planing with footstraps. It's great to teach kids to windsurf and it rolls up into a bag. The Deluxe version adds a full daggerboard case for extra windsurfing performance.

WHAT'S NEW?

New double-layer, low-extension drop-stitch technology for added stiffness, improved durability, higher resistance to puncture, improved shape stability over time and reduced weight.

NEW



WINDSUP INFLATABLE ZEN

DESCRIPTION

Compact, light and strong; you can go paddleboarding, learn windsurfing and get planing with footstraps. It's great to teach kids to windsurf and it rolls up into a bag.

WHAT'S NEW?



New removable centre fin box. New integrated deck plate for improved user-experience. New improved bag.

NEW

SPECIFICATIONS

	Whopper 10'0" x 35"	Blend 11'2" x 32"	Touring 11'6" x 30"	Atlas 12'0" x 33"	Touring 12'6" x 31"
Length	305	341	354	366	384
Width	89	81.5	76	84	78.5
Thickness	6"	6"	6"	6"	6"
Weight	TBA	TBA	TBA	TBA	TBA
Fins <i>Supplied with board</i>	Drake Shallow 22 + Daggerboard 57	Drake Shallow 22 + Daggerboard 57	Drake Shallow 22 + Daggerboard 57	Drake Shallow 22 + Daggerboard 57	Drake Shallow 22 + Daggerboard 57
Fin Box	US Box + Clipperbox	US Box + Clipperbox	US Box + Clipperbox	US Box + Clipperbox	US Box + Clipperbox

SPECIFICATIONS

	Converse 9'0" x 30"	Junior 10'6" x 25"	Whopper 10'0" x 35"	Blend 11'2" x 32"	Touring 11'6" x 30"	Atlas 12'0" x 33"	Touring 12'6" x 31"
Length	274	323	305	341	354	366	384
Width	76	63.5	89	81.5	76	84	78.5
Thickness	4.75"	4.75"	4.75"	4.75"	4.75"	4.75"	4.75"
Weight	TBA	TBA	TBA	TBA	TBA	TBA	TBA
Fins <i>Supplied with board</i>	2x Drake Shallow 22	2x Drake Shallow 22	2x Drake Shallow 22	2x Drake Shallow 22	2x Drake Shallow 22	2x Drake Shallow 22	2x Drake Shallow 22
Fin Box	1x US Box 1x Removable US Box	1x US Box 1x Removable US Box	1x US Box 1x Removable US Box	1x US Box 1x Removable US Box	1x US Box 1x Removable US Box	1x US Box 1x Removable US Box	1x US Box 1x Removable US Box

AIRPLANE

DESCRIPTION

The innovative inflatable windsurf boards capable of full planing and full carve jibing.

WHAT'S NEW?

We improved top speed, reduced drag and made the AirPlanes easier to get planing by enclosing the box permanently in the board. It is glued in place and no longer removable, which makes the board easier to set up. The bottom shape in the tail becomes clean and more streamlined.

New double-layer, low-extension drop-stitch technology for added stiffness, improved durability, higher resistance to puncture, improved shape stability over time and reduced weight.



New removable centre fin box. New integrated deck plate for improved user-experience.

SPECIFICATIONS

	230	242	255	270	290	290 School Edition
Length	230	242	255	270	290	290
Width	65	72	78	84	90	90
Thickness	4.75"	6"	6"	6"	6"	6"
Weight	NA	NA	NA	NA	NA	NA
Fins	Drake FreeRide Power 40	Drake FreeRide Power 40	Drake FreeRide Power 42 + Drake Shallow 22	Drake FreeRide Power 42 + Drake Shallow 22	Drake Shallow 41 + Daggerboard 57	Drake Shallow 41 + Daggerboard 57
Fin Box	Tuttle Box + Removable US Box	Tuttle Box + Removable US Box	Tuttle Box + Removable US Box	Tuttle Box + Removable US Box	Tuttle Box + Clipper Box	Tuttle Box + Clipper Box

RIO

DESCRIPTION

The go-to board for entry-level windsurfing and schools. The combination of a long tail design with bat-wings, thick boxy rails, low nose rocker and a flat deck make it glide better than a conventional beginner board yet with more stability. The long tail design also makes the Rio the board that transitions the easiest into planing.

All sizes include the Long Tail technology for the easiest transition into planing. Built in ArmourTech and available in two finishes: standard and all-white School Edition.

SPECIFICATIONS

	S	M	L	XL
Volume	S	M	L	XL
Length	295	308	333	336
Width	79	82	87	83
Weight <i>Armour Tech</i>	13.2	14.2	15.9	18.0
Weight <i>Armour Tech School Edition</i>	13.2	14.2	15.9	
Fins <i>Supplied with board</i>	1x Drake Shallow 310 1x Clipperbox Daggerboard 570	1x Drake Shallow 410 1x Clipperbox Daggerboard 570	1x Drake Shallow 410 1x Clipperbox Daggerboard 570	1x Drake Shallow 220 Black US
Fin Box	Tuttle Box + Clipperbox	Tuttle Box + Clipperbox	Tuttle Box + Clipperbox	US Box + Allgaier



NEW

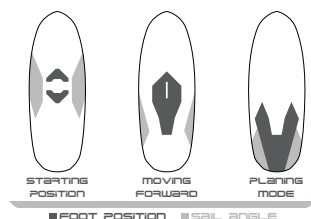
START

DESCRIPTION

The World's most stable windsurf board. Popular with windsurfing schools as the first board to teach beginners on. With its exceptional stability, there is no easier board to learn windsurfing on.

WHAT'S NEW?

New deck EVA with tough HD rails for improved durability. The HD EVA extends over the nose and tail where the boom drags across when uphauling the sail. New colours and a refreshed, modern graphic design.



SPECIFICATIONS

	M	L
Volume		
Length	284	286
Width	94.5	101
Weight <i>Armour Tech</i>	17.17	17.85
Fins <i>Supplied with board</i>	1x Drake Shallow 410 1x Clipperbox Daggerboard 570	1x Drake Shallow 410 1x Clipperbox Daggerboard 570
Fin Box	Tuttle Box + Clipperbox	Tuttle Box + Clipperbox



WINDSUP

DESCRIPTION

Boards that cover windsurfing and paddle boarding in one. Each WindSUP is based on a popular Starboard paddleboard shape and have an added mast track and centre-fin box to plug in a sail and centre-fin for windsurfing use. A great choice for sharing windsurfing, paddle boarding with friends and family.

AVAILABILITY

The soft deck ASAP and the painted, polished StarShot offer our two lowest price points with the choice between a full soft-deck finish or hard painted deck finish. StarLite is an upgraded version of StarShot with an impact-resistant Carbon Innegra rail finish and a more premium graphic design.

SPECIFICATIONS

	Converse 9'0" x 30"	Whopper 10'0" x 34"	Blend 11'2" x 30"	Atlas 12'0" x 33"	Freeride 12'2" x 30"	Freeride 12'2" x 32"
Volume						
Length	277	245	370	370	373	368
Width	77.5	77.0	85.0	85.0	75.0	82.0
Weight <i>ASAP</i>		TBA	TBA	TBA	TBA	TBA
Weight <i>StarLite</i>	TBA	TBA	TBA	TBA	TBA	TBA
Weight <i>StarShot</i>	TBA	TBA	TBA	TBA	TBA	TBA
Fins <i>Supplied with board</i>	4x 4.5" + 1x 6" 3/4"	2x 4.7" + 1x 6" 3/4" + Drake Shallow 410 + Plug	2x 4.5" + 1x 8" + Drake Shallow 410 + Plug	1x 8" + Drake Shallow 410 + Plug	1x Race 24 + Drake Shallow 410 + Plug	1x Race 24 + Drake Shallow 410 + Plug
Fin Box	US 8" + 4x Surf Fin Z	US 10" + 2x Surf Fin Z + Deep Tuttle	US 10" + 2x Surf Fin Z + Deep Tuttle	US 10" + Deep Tuttle	US 10" + Deep Tuttle	US 10" + Deep Tuttle



WATERMAN PACKAGES

◀ DESCRIPTION

An attractively priced grab-and-go package by Starboard for windsurfing and paddle boarding in one. The board is great for flat water paddling, open ocean paddling and lightwind windsurfing up to a semi-planing.

◀ WHAT'S NEW?

Improved sail design with a longer second batten, stiffer boom clamp and a more durable universal joint.



WATERMAN INFLATABLE PACKAGES

◀ DESCRIPTION

The compact version of the Waterman Package: includes an inflatable WindSUP board with Rail Edge technology and screw-in footstrap inserts, a Compact sail with a four-piece compact mast and a three-piece paddle.

◀ WHAT'S NEW?

Improved sail design with a longer second batten, stiffer boom clamp and a more durable universal joint. New removable centre fin system.

SPECIFICATIONS

Board	WindSUP 12'2" x 30" Freeride Starshot or WindSUP 11'2" x 30" Blend Starshot
Sail	WindSUP Classic 5.5
Paddle	SUP Enduro 2.0 Tiki Tech M With Hybrid Carbon 3 Pcs Adjustable S35

SPECIFICATIONS

Board	WindSUP 11'6" x 30" Touring Inflatable Zen or WindSUP 11'2" x 32" Blend Inflatable Zen
Sail	WindSUP Compact 5.5
Paddle	SUP Enduro 2.0 Tiki Tech M With Hybrid Carbon 3 Pcs Adjustable S35



WINDSUP SAIL

DESCRIPTION

The sail package for powering SUP boards and beginner windsurf boards. Starboard's WindSUP sail is a great addition to any SUP board fitted with a sail connection or for first time windsurfers learning and progressing. Light, powerful and designed specifically to provide drive and forward pull at a low weight.

WHAT'S NEW?

4.5, 5.5, 6.5: improved sail design with a longer second batten, stiffer boom clamp and a more durable universal joint.

1.2, 2.0, 3.0: all-new sails, replacing the 'Kids' sails and the 'Start' sails. The 1.2 and 2.0 have a mini-mast that replicates the right stiffness and flex of a larger sail for these tiny sizes. Drastically lighter and better adapted to kids.

SPECIFICATIONS

Volume	1.2	2.0	3.0	4.5	5.5	6.5
Luff	205	250	310	385	434	456
Boom	102	110	150	175	186	206
Recommended Mast	Super Skinny 205	Skinny 250	310 RDM	285 RDM	430 RDM	430 RDM



WINDSUP COMPACT SAIL

DESCRIPTION

The compact version of the WindSUP sail package. With its four-piece mast and three-piece boom, everything collapses into a small bag that's convenient to carry and store.

WHAT'S NEW?

Improved sail design with a longer second batten, stiffer boom clamp and a more durable universal joint.

SPECIFICATIONS

Volume	5.5	6.5
Luff	434	456
Boom	186	206
Recommended Mast	430 RDM	430 RDM



ULTRAKODE BOUJMAA GUILLOUL

PRO MODEL LTD. EDITION
I. W. T. CHAMPION

To commemorate Boujmaa's 2016 AWT Title, we are proud to introduce Boujmaa's custom wave board shape as a limited-edition production series.

"I use this board from light wind side offshore to high wind onshore, it turns easy and forgives my mistakes with the soft rails. It turns with a lot of speed and it feels great when I go with all this speed down the line, laying on the rail all the way through the top turn. It easily reconnects with the next drive and keeps the same speed. In the onshore conditions, I can easily make it turn fast on the bottom and top turn too. The board feels like perfection for me. It is a sum of a long time of work to get to where we are with it."

Boujmaa Guilloul, AWT Champion 2016

SPECIFICATIONS

Volume	78
Length	218.6
Width	53.9
Weight <i>Carbon Reflex</i>	TBA
Weight <i>Carbon LCF</i>	TBA
Fins Supplied with board	1x TF Boujmaa 17 Center + 2x TF Boujmaa 10 Side
Fin Box	2x Starbox 1x US Box 8"



BOUJMAA GUILLOU

STARBOARD



ULTRAKODE KEVIN PRITCHARD

PRO MODEL LTD EDITION
ALOHA CLASSIC CHAMPION

Just after Boujmaa's AWT win, Kevin Pritchard was crowned 2016 Aloha Classic Champion. Naturally, to commemorate this title, we are proud to introduce Kevin's Maui wave board as a limited-edition production series.

"The best thing about my pro model is that you can take the board anywhere. It's fast, it turns well, it floats on the light days, and grinds through on the windy days. I am really stoked on it! One of the things that I like is the narrower nose on it. It really frees the board up and has a very light and crispy feeling to it. I have been riding it mostly with the thruster set up but I think for bigger waves the quad set up will work quite well. I always say that a good board is a good board, no matter what fin set up you have on it. I think that for different style of turns, you can put in different fins in the board and that's what makes it fun. The rocker line is pretty much the same rocker line that I have been using for the last 10 years or so and it just gets more and more refined. I have been using the MFC TF fins with a 10 for the side fins and a 16 for the center fin. It is a pretty small set up but it keeps the board really loose. I have been running them with the leading edge at 41 and 30cm from the tail. It has been working out pretty good."

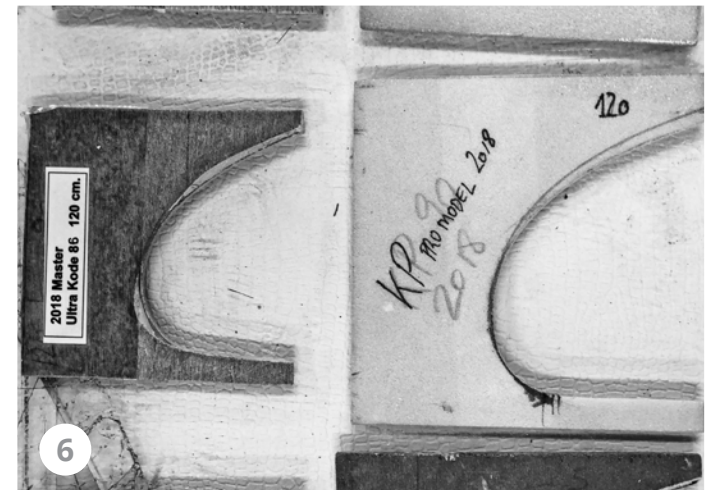
Kevin Pritchard, Aloha Classic Champion 2016

SPECIFICATIONS

Volume	86
Length	229.6
Width	55.5
Weight <i>Carbon Reflex</i>	TBA
Weight <i>Carbon LCF</i>	TBA
Fins Supplied with board	2x TF Kevin 17 Center + 2x TF Kevin 11 Side
Fin Box	4x Starbox 1x US Box 8"



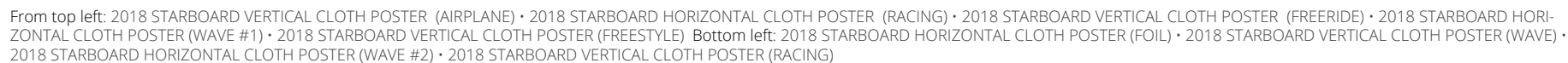
KEVIN PRITCHARD
SLASH CLASSIC CHAMPION 2016



What are the differences between the UltraKode, Boujmaa's board and Kevin's board?

Boujmaa's board generates grip by using a mono-concave in the tail, then adds a lot more tail kick (1) and nose kick (2) for maneuverability. The rails are similar in the midsection (3) and without vee in the tail, Boujmaa's boards relies on its much softer, rounder and thicker rail under the back foot (4) for rail to rail transitions. His board is smooth, forgiving and most maneuverable.

Kevin's board has only slightly more tail kick than the regular UltraKode (5). It uses its narrower width to create speed and quick rail-to-rail transitions. To make this style of board versatile, floaty and comfortable, it has lots more thickness and rail volume (6). The added length, narrow nose and narrow width makes the board ride very free.



BOARD BAG RANGE 2018



RECYCLED POLYESTER
450D FABRIC



ULTRA DURABLE
RIPSTOP TECHNOLOGY



FLIPPED CONSTRUCTION



8/10 MM PADDING



NAME CARD HOLDER



HEAT REFLECTIVE
COLOR



AIR VENTILATION



HEAVY DUTY
CORROSION-FREE ZIPPER



EXTRA-PADDED
SHOULDER HANDLE

Starboard's new ReCover are stitched together then flipped inside out, like t-shirts, creating a lighter bag with a double thickness padding along the rail edges. Inverted construction eliminates the need for heavy reinforcement webbing, making the bag significantly lighter.

The ReCover has an outer fabric layer made from recycled plastic bottles. Upcycled from the streets, this polyester 450D fabric makes the ReCover one of the lightest, toughest and eco friendly board bags on the market.

INNOVATION
EQUUS BOARD



RECOVER

8MM THICK PADDING

220x63	232x60	235x67
240x78	240x88	240x101
252x87	285x100	308x82
336x87		



TRAVEL RECOVER

8+10MM THICK PADDING

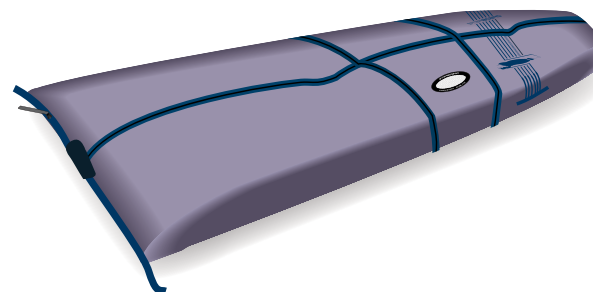
Triple Wave (240x70x35)
Double iSonic (250x85x25)
Triple iSonic (250x85x35)
Formula



PHANTOM RECOVER

8+10MM THICK PADDING

299 377/377L



INNOVATION
EQUUS BOARD